



SHELTER IN PLACE



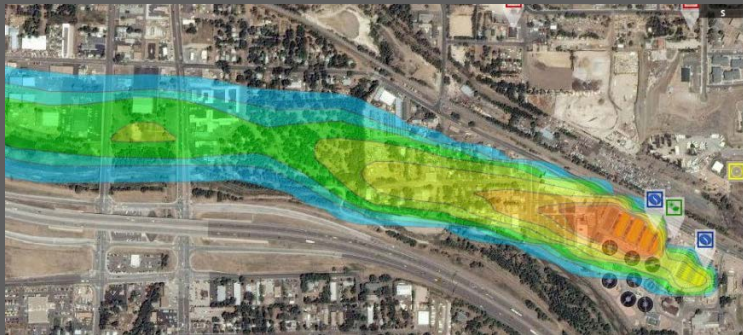
WHAT IS SHELTERING IN PLACE

- Sheltering-In-Place is the use of a structure and its indoor atmosphere to temporarily separate individuals from a hazardous outdoor atmosphere.
- In simpler terms, SIP means in case of emergency going into a building that can be sealed to prevent outside air from getting inside.



HAZARDOUS MATERIALS

- Transportation Incident: Highway, Rail, or Pipeline
- Water or Wastewater Treatment Plant Release of Chlorine
- Manufacturing or Facility Incident
- Refrigerated Warehouse Release of Ammonia



HOW WILL I KNOW

- The order to Shelter in place would likely come from one of the following:
 - Fire Fighters
 - County Emergency Management
 - Law Enforcement
 - Local Public Officials
- Emergency notifications may be made via any of the following methods:
 - Television / Radio
 - Telephone
 - Door to Door
 - Social Media
- Notification methods vary for each community. You need to check with your County Emergency Management Agency to learn what is available in your community.



EIGHT STEPS TO REMEMBER

1. Move people and pets indoors.
2. Close and lock all windows and exterior doors.
3. Turn off Ventilation System including all fans, heating and air conditioning systems.
4. Go to an interior room preferably without windows.
5. Seal the room using duct tape and plastic sheeting.
6. If you smell a chemical odor, use a wet towel to cover your nose and mouth.
7. Monitor the news media for emergency instructions. Depending on you community, this could include television, radio, or social media outlets.
8. Continue sheltering in-place until you are told all is safe or you are told to evacuate. When you are notified the threat is over, open doors and windows to ventilate your home or office.

STEP 1

MOVE EVERYONE INDOORS

- Quickly move everyone indoors, and do not use elevators. Bring your pets inside with you.
- Retrieve your Shelter In-Place kit if you have one.

STEP 2: CLOSE AND LOCK ALL WINDOWS AND EXTERIOR DOORS

- Locking the exterior doors and windows creates a more air tight seal.
- During your pre-planning, identify any leaky or drafty door or windows that you

STEP 3: TURN OFF VENTILATION SYSTEM

- Turn off all heating, air conditioning and ventilation systems; turn the inlets to the “closed” position
- Close a fireplace damper. Extinguish a fire if is burning in a fire place or heater.

STEP 4: GO TO AN INTERIOR ROOM

- Pre-select an interior room with no or few windows. If possible, select a room that has access to water and restroom facilities.
- An above-ground location is preferable because some chemicals are heavier than air, and may seep into basement windows.

STEP 5: GO TO AN INTERIOR ROOM

- Seal the room using duct tape and plastic sheeting. Cover all doors, vents and windows.
- The plastic should be heavier than food wrap.
- These supplies should be contained in your Shelter In-Place kit.

STEP 6: IF YOU SMELL A CHEMICAL ODOR

- Use a wet towel to cover your nose and mouth if you smell a chemical odor.
- If your door is not sealed with plastic and duct tape, place wet, clean towels under the door to block harmful vapors.

STEP 7: MONITOR THE NEWS MEDIA FOR EMERGENCY INSTRUCTIONS

- Depending on you community, you could receive emergency information from television, radio, or social media outlets.
- Keep monitoring for updates and changes in emergency instructions. Local officials may call for evacuation in specific areas.
- Pre-plan options on how you can monitor emergency information on television, radio, and social media.

STEP 8: WHEN THE INCIDENT IS OVER

- When you are notified threat is over, open doors and windows to ventilate your home or office.
- Go outside while your home or office ventilates.
- Review your response and make any needed changes. Replace any used supplies in your shelter in-place kit.

QUESTIONS – SHELTER IN PLACE

Curtis Knowles, FPEM

Program Manager –Post Disaster Recovery &

Program Manager –Local Emergency Planning Committee

Email: cknowles@cfrpc.org

Phone: 863-534-7130 Ext. 124

555 East Church Street

Bartow, FL 33831

