



**FLORIDA DEPARTMENT OF TRANSPORTATION**

# **TRENDS IN TRANSPORTATION**

**L.K. Nandam, P.E., District One Secretary**



# WHAT'S TRENDING? GROWING POPULATION

Florida's population is projected to grow from

**20.8 MILLION**

in **2018** to

**26.5 MILLION**

residents in **2040**

An increase of

**27%**

Florida's

**TOTAL  
DAILY VMT**

**+10.5%**

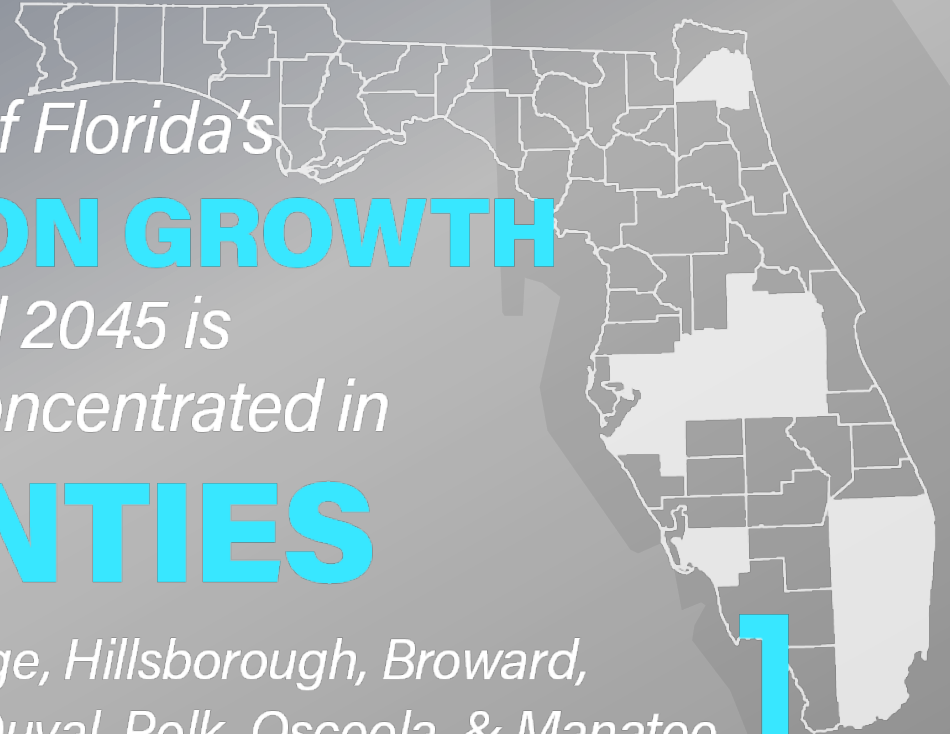
since 2008

**67%** of Florida's  
**POPULATION GROWTH**

between 2018 and 2045 is  
projected to be concentrated in

**10 COUNTIES**

[ Miami-Dade, Orange, Hillsborough, Broward,  
Palm Beach, Lee, Duval, Polk, Osceola, & Manatee ]





# Trends Impacting Transportation

**Governor's Priorities: Enhance Safety, Improve Mobility and Leverage Technology**

**Our Mission:**

The Department will provide a **safe transportation system** that ensures the **mobility of people and goods**, enhances economic prosperity, and preserves the **quality of our environment and communities**.

**How do we accomplish this?**

- ▮ **Plan and Design for Safety**
- ▮ **Mobility Enhancement through community partnerships**
- ▮ **Promote Technologies to Enhance our Efforts**



# Trends Impacting Transportation

**Safety**

**Community Success**

**Technology**

- ///▶ Florida Transportation Plan**
- ///▶ Improved Mobility**
- ///▶ Partnering with Communities**
- ///▶ Focus on Safety – Vision Zero**



# Trends Impacting Transportation

**Safety**

**Community Success**

**Technology**

## Community Engagement

### **Designing and Planning for a Transportation Network that promotes Community Visions – Through Planning Studio**

- Heartland 2060 Plan
- TPO Long Range Transportation Planning Process
- Multi modal master planning in partnership with local partners
- Comprehensive Plan updates
- Freight Master Plans aligned with local plans and industry trends
- Corridor/Network Master planning



# Trends Impacting Transportation

**Safety**

**Community Success**

**Technology**

## Strategic Intermodal System Planning

▮ **SIS facilities backbone of Heartland**

▮ **Master Planning of corridors critical to maintain mobility**

- US 17 Widening Complete
- SR 29 PD&E
- US 27 System Improvements
- SR 60 PD&E
- SR 70 Master Planning
- I-4 Ultimate Master Planning
- NE Polk Mobility study

▮ **Need for parallel network to support and protect SIS facilities**

▮ **MCORES**



## Purpose

Revitalize rural communities

Encourage job creation

Provide regional connectivity while leveraging technology

Enhance quality of life and public safety

Protect the environment and natural resources

## Objective

Advance construction of regional corridors intended to accommodate multiple modes of transportation and multiple types of infrastructure



### Legend

- Suncoast Connector
- Northern Turnpike Connector
- Southwest-Central Florida Connector
- Urban Area
- Commercial Service Airports
- Seaports
- Spaceports
- Interstates
- Toll Roads
- Toll Roads Under Construction
- State Highways
- Active Rail

### STUDY AREA FACTS

#### Suncoast Connector

- 8 Counties
- 21 Cities & Towns
- 5,635 Square Miles of Land Area
- 286,827 Residents
- 48,780 Jobs
- 2,217 Lane Miles of State Highway System
- 147 Miles of Active Rail
- 1 Seaport

#### Northern Turnpike Connector

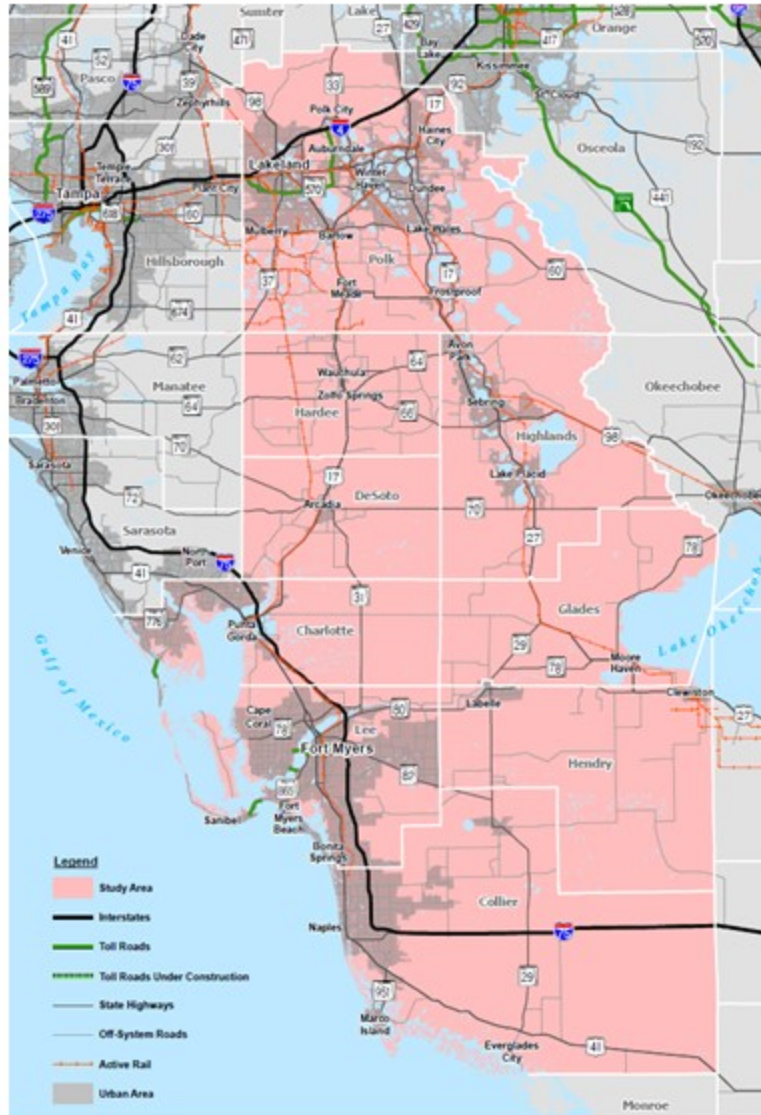
- 4 Counties
- 20 Cities & Towns
- 3,831 Square Miles of Land Area
- 677,430 Residents
- 136,305 Jobs
- 2,162 Lane Miles of State Highway System
- 158 Miles of Active Rail
- 1 Seaport

#### Southwest-Central Florida Connector

- 9 Counties
- 36 Cities & Towns
- 9,511 Square Miles of Land Area
- 2,251,543 Residents
- 590,999 Jobs
- 4,793 Lane Miles of State Highway System
- 600 Miles of Active Rail
- 2 Commercial Service Airports

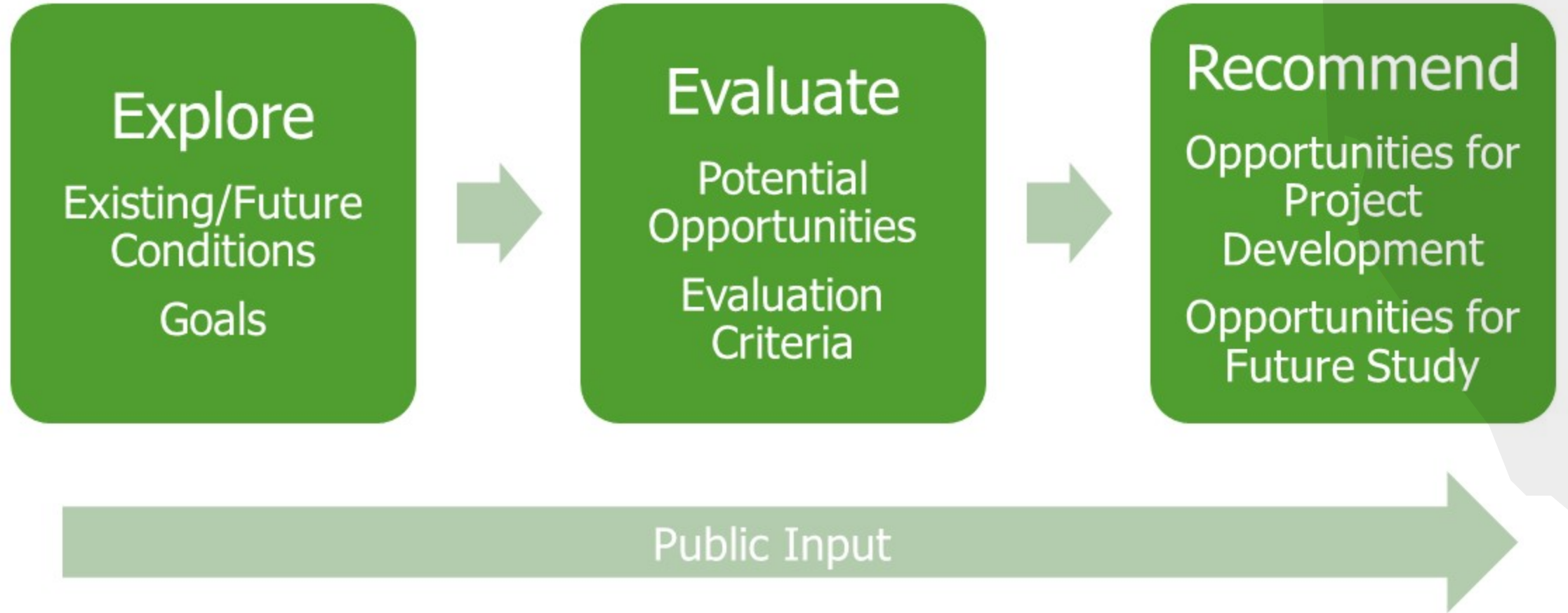
Sources:  
 Florida Cities & Towns: <http://www.f5counties.com/florida-cities-county>  
 Land Area: <http://www.esa.com/ark/florida/state-land-area-county.html>  
 Population & Employment: <http://www.census.gov/decennial/census2000/states/fl00.html>  
 Lane Miles: <http://www.flor.gov/statistics/mileage-data/default.asp#200>  
 Rail Miles: [http://www.flor.gov/metadata/active\\_rail\\_miles.asp](http://www.flor.gov/metadata/active_rail_miles.asp)  
 Seaports: <http://www.flor.gov/seaport/seaport.asp>  
 Airports: <http://www.flor.gov/cabin/FAA0201/>





## Southwest-Central Florida Connector

from Collier County to  
Polk County  
140 miles





**Suncoast Connector** task force and **Northern Turnpike Connector** task force shall evaluate design features and the need for acquisition of state conservation lands that mitigate the impact of project construction on:

- a. Water quality and quantity of springs, rivers, and aquifer recharge areas
- b. Agricultural land uses
- c. Wildlife habitat



- Southwest-Central Florida Connector** task force shall:
- a. Address the impacts of project construction on panther and other critical wildlife habitat and evaluate the need for acquisition of lands for state conservation or as mitigation for project construction
  - b. Evaluate wildlife crossing design features to protect panther and other critical wildlife habitat corridor connections

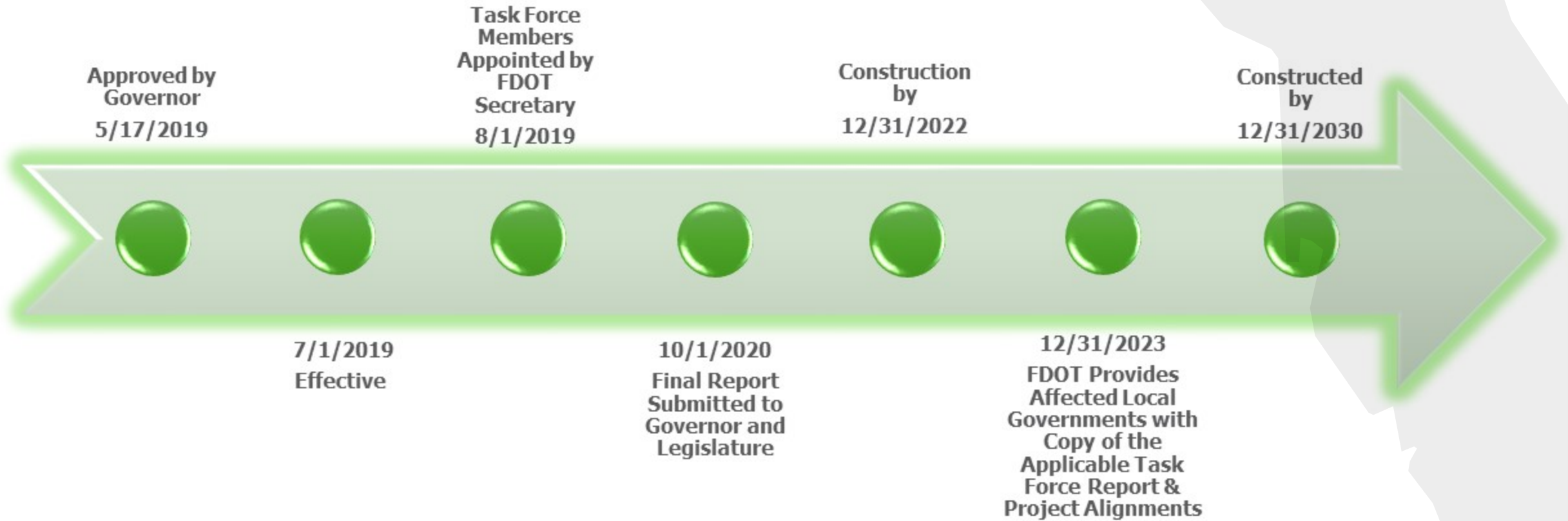


- Task Forces may consider and recommend innovative concepts to **combine right-of-way acquisition with the acquisition of lands or easements to facilitate environmental mitigation or ecosystem, wildlife habitat, or water quality protection or restoration**



- FDOT, in consultation with the Department of Environmental Protection, may incorporate those features into each corridor during the project development phase
- FDOT may accept donations of land for use as transportation rights-of-way or to secure or use transportation rights-of-way for such projects





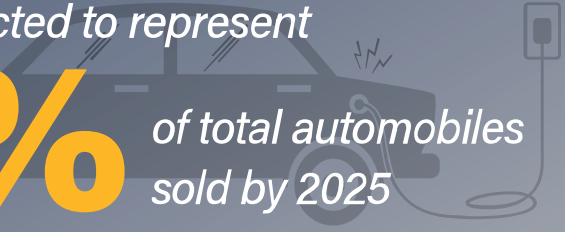
Project construction in any corridor is not eligible for funding until submission of the final report of the corridor task force for that corridor and completion of 30 percent of the design phase of any project within a corridor, except for project phases that are under construction or for which project alignment has been determined.



# TECHNOLOGY ADVANCEMENTS AUTONOMOUS-CONNECTED- ELECTRIC- SHARED (ACES)

Nationally,  
**FULLY ELECTRIC VEHICLES**  
are projected to represent

**8%** of total automobiles  
sold by 2025



The global market for  
**CONNECTED CARS**  
is expected to grow

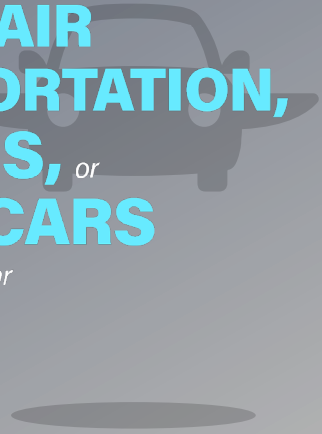
**270%** by 2022



**SHARED AIR  
TRANSPORTATION,  
AIR TAXIS, or  
FLYING CARS**

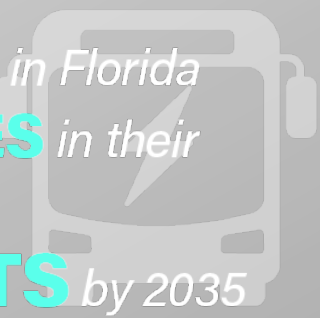
may launch by the year

**2023**



**MULTIPLE URBAN AREAS** in Florida  
already have **ELECTRIC BUSES** in their  
fleets and many plan to transition to

**ALL-ELECTRIC FLEETS** by 2035



The cumulative  
number of  
**SHARED  
VEHICLE TRIPS**

has

**INCREASED**

**10X**

in the last

**5 YEARS**





# ACES Effects

## Land Use

- Higher density requirements may be more attainable
- Reduced Parking Lot Sizes
- Remote lots to make better use of urban land

## Transportation Demand

- Scenario based modeling

## Infrastructure

- Test beds
- Industry Partnerships

## Blue Polygons = Parking





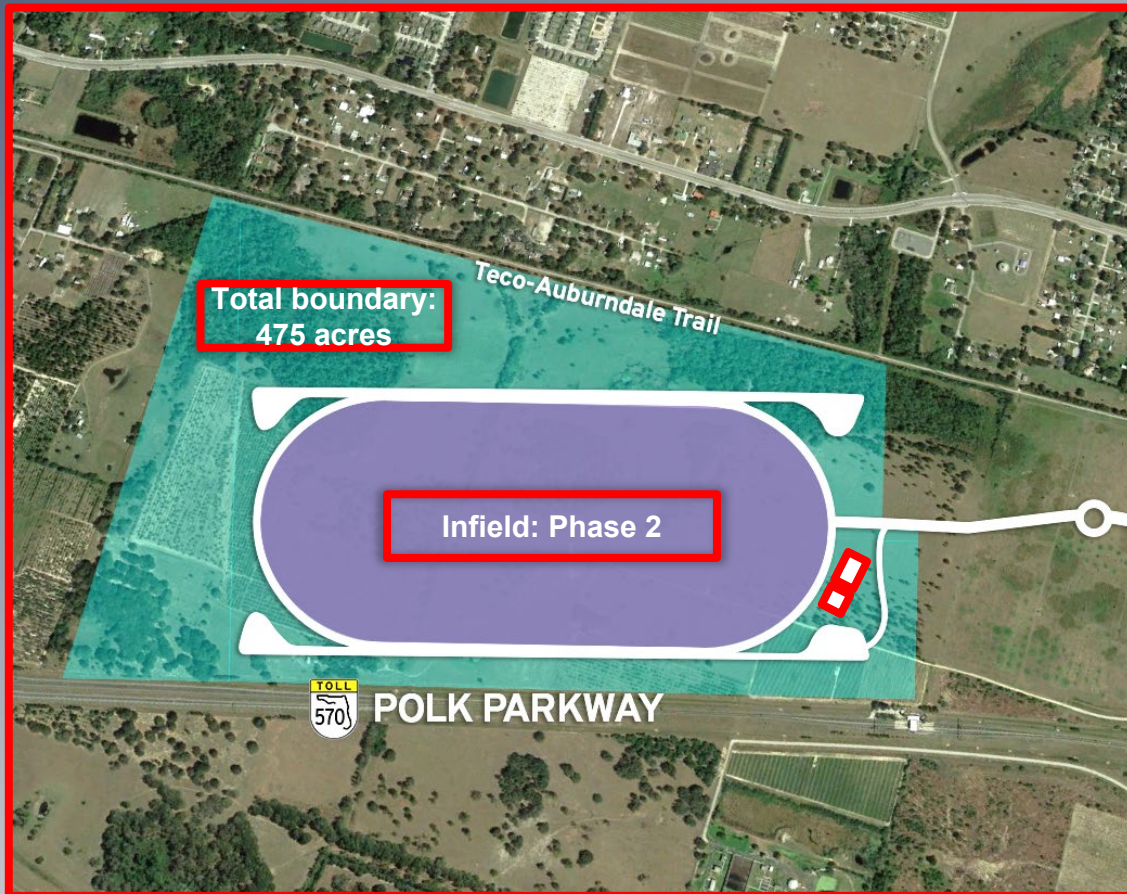


# Trends Impacting Transportation

Safety

Community Success

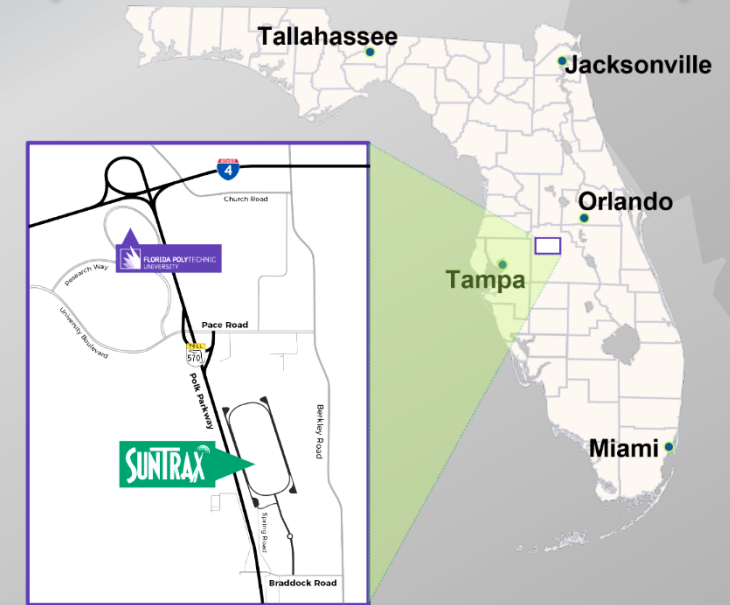
Technology



## Project Location

← 45 miles to Tampa

→ 46 miles to Orlando





# Trends Impacting Transportation

Safety

Community Success

Technology

- Varied Environments
- Diverse Scenarios
- Highly Reconfigurable

- 1 Main Access & Building Facilities
- 2 Sensor Test Chamber
- 3 Roadway Geometry Track
- 4 High-Speed Oval
- 5 Loop Track
- 6 Pick-Up/Drop-Off
- 7 Urban
- 8 Complex Suburban
- 9 Dynamic Test Pad



**THANK YOU**